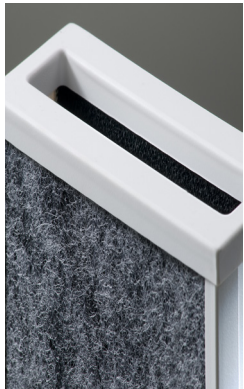


# Wedge & Cartridge Filters

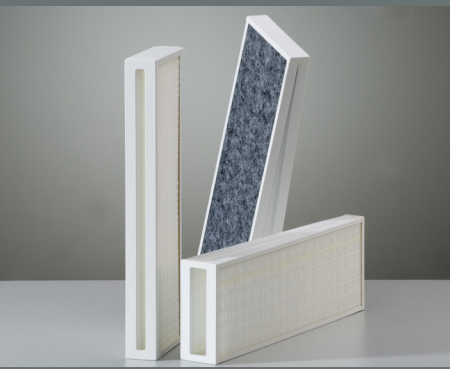
## Wedge Filters - In Filter Classes M6-H14



Due to their compact design, wedge filters are ideal for use in ducts with small cross sections. EMW® wedge filters are used in clean rooms, ventilation systems for large commercial vehicles and many other applications. These filters are fully incinerable for easy disposal.

- Available in EN 779 & EN 1822 Filter Classes M6-H14
- Reliable service even at 100% relative humidity
- Maximum service temperature: 80 °C

Wedge Filters



### Dimensions (WxHxD)

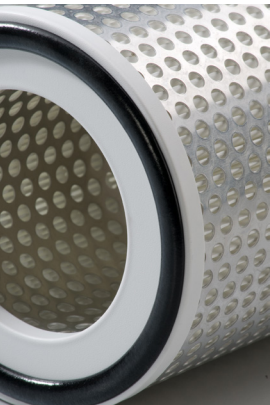
86.5 x 202 x 375 mm

86.5 x 202 x 600 mm

600 x 65 x 202 mm

Other dimensions  
available on request

## Cartridge Filters - In Filter Classes M6-H14



EMW® cartridge filters are available in EN 779 Filter Classes M6-F9 and EN 1822 Filter Classes E10-H14. Their mini-pleat filter medium is securely mounted on the plastic frame with a cast airtight joint. A continuous foamed-in-place seal over the joint further ensures airtightness. A perforated metal guard is available as an option for additional stability under high aerodynamic stress.

- Available in EN 779 & EN 1822 Filter Classes M6-H14
- Reliable service even at 100% relative humidity
- Maximum service temperature: 80 °C

Cartridge filters



### Dimensions (DxH)

176 x 226 mm

176 x 176 mm

200 x 200 mm

200 x 400 mm

220 x 140 mm

Other dimensions  
available on request



**In** EN 779 Filter Class M6-F9 and EN 1822 Filter Classes E10-H14.

# Wedge & Cartridge Filters